



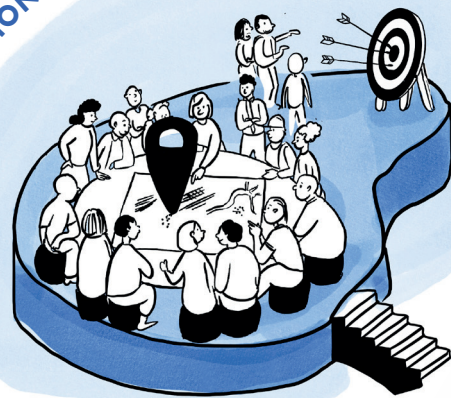
Towards a circular economy

Our approach

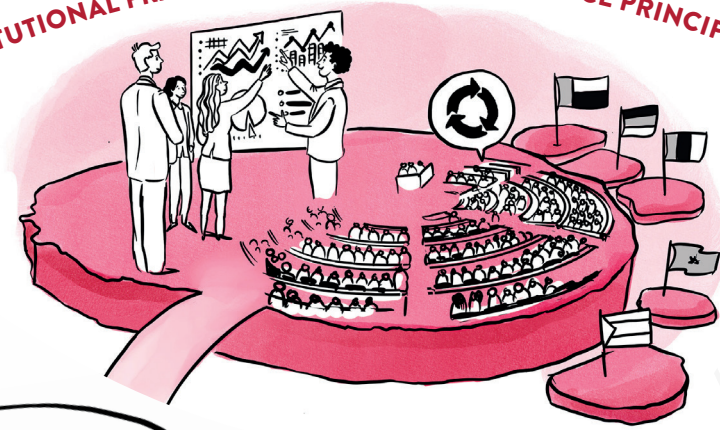
Urban Development and Circular Economy Division
Sustainable Development Department

Local public actors effectively implement policies related to the circular economy

IMPLEMENTATION OF CE ACROSS TERRITORIES



INSTITUTIONAL FRAMEWORKS FAVORABLE TO THE CE PRINCIPLES



National legal frameworks incorporate the principles of circular economy and are aligned with international regulations

Dynamic territories

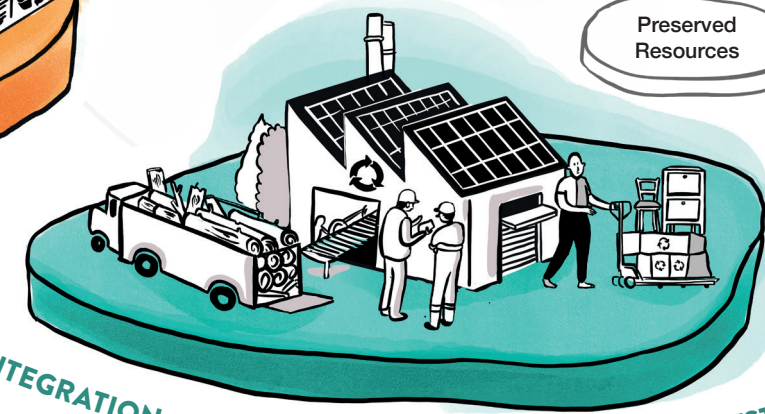
CONTRIBUTE A MORE RATIONAL USE OF RESOURCES AND A TRANSITION TOWARDS MORE SUSTAINABLE WAYS OF LIVING

Improved health conditions

EVOLUTION OF CONSUMPTION PATTERNS



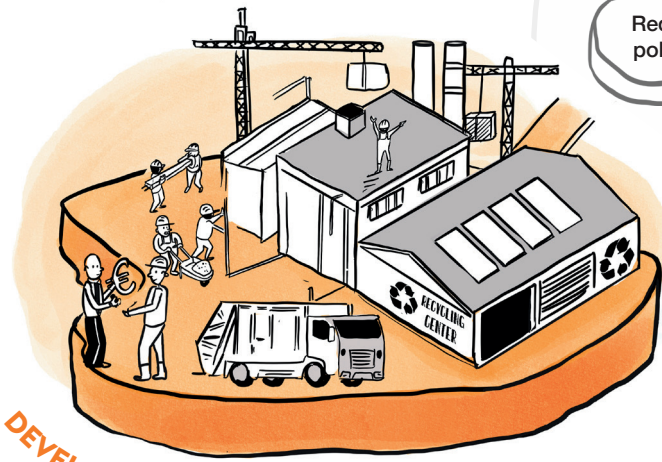
Preserved Resources



INTEGRATION OF CE PRINCIPLES INTO PRODUCTION SYSTEMS

Private actors apply and contribute to the legal and regulatory framework for a circular model

Reduced pollution



DEVELOPMENT OF ACCESSIBLE SERVICES

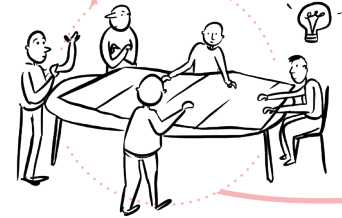
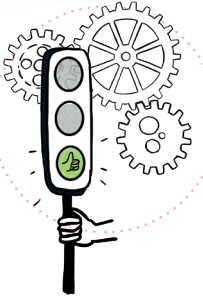
Services are accessible for the application of the circular economy in different sectors (recycling, reuse, etc.)

People adopt responsible consumption behaviours with a reduced impact on the environment (they buy less, throw less and repair more)

INSTITUTIONAL FRAMEWORK FAVORABLE TO THE CE PRINCIPLES



Institutional actors have a solid grasp of the principles of circular economy



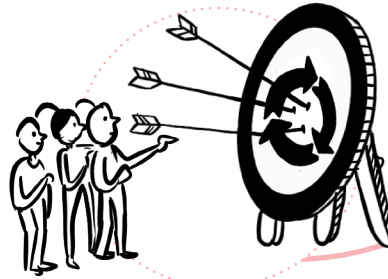
Consultation frameworks bring together the different stakeholders in the sector



The informal sector is organized and integrated into the different streams (waste, recycling, reuse)



ERP systems are set up



The key stakeholders have a common vision of the circular economy and its application in different sectors



Decision-makers have reliable indicators and data to help them make decisions

Countries adhere to international/regional treaties related to the circular economy and transpose them into national legislation



Laws and public policies are developed and implemented to enable the application of the CE



The government adopts laws and develops sectoral action plans

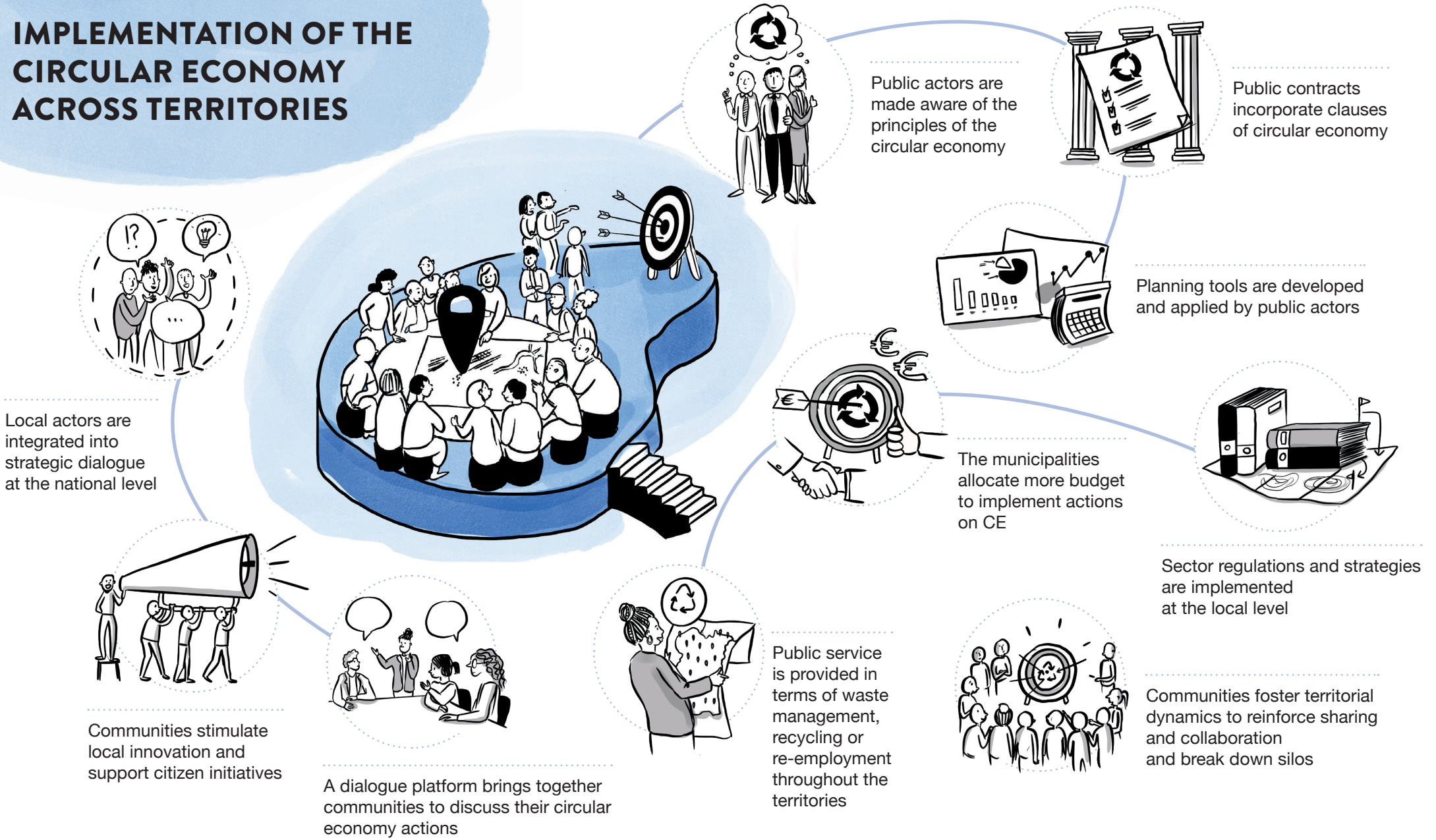
INDICATIVE ACTIVITIES

- Mapping of stakeholders and policy instruments
- Support the development or strengthening of regulatory instruments
- Training of institutional actors on CE and its application in different sectors

- Implementation of multi-stakeholder consultation platforms
- Support the collection and analysis of data related to EC
- Collaboration with research institutions and universities for knowledge production

- Exchange of good practices (study tours, workshops...)
- Support the development of regional strategies

IMPLEMENTATION OF THE CIRCULAR ECONOMY ACROSS TERRITORIES



Local actors are integrated into strategic dialogue at the national level

Public actors are made aware of the principles of the circular economy

Public contracts incorporate clauses of circular economy

Planning tools are developed and applied by public actors

The municipalities allocate more budget to implement actions on CE

Sector regulations and strategies are implemented at the local level

Communities foster territorial dynamics to reinforce sharing and collaboration and break down silos

Public service is provided in terms of waste management, recycling or re-employment throughout the territories

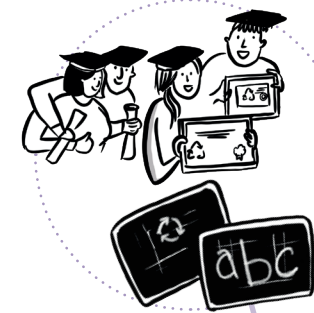
A dialogue platform brings together communities to discuss their circular economy actions

Communities stimulate local innovation and support citizen initiatives

INDICATIVE ACTIVITIES

- Support for local actors in public procurement and monitoring of public contracts
- Sectoral diagnostics based on reliable and accessible data
- Creation of dialogue platforms at the territorial level and with the national level
- Training and technical support
- Implementation of standards, certifications and labels
- Financing of pilot projects for recycling or reuse

EVOLUTION OF CONSUMPTION PATTERNS



Environmental education is strengthened at the school level



Associations and CSOs set up public awareness actions



People are made aware of the harmful impacts of over-consumption and «bad consumption» and develop environmental awareness



The public is aware of the advantages and the incentives related to changes in consumer practices



The public respects the laws in force and resort to economic incentives



Clear and harmonized sorting instructions exist and are disseminated



Citizen initiatives promote more responsible consumption practices



People apply good practices in terms of reduction, reuse or recycling

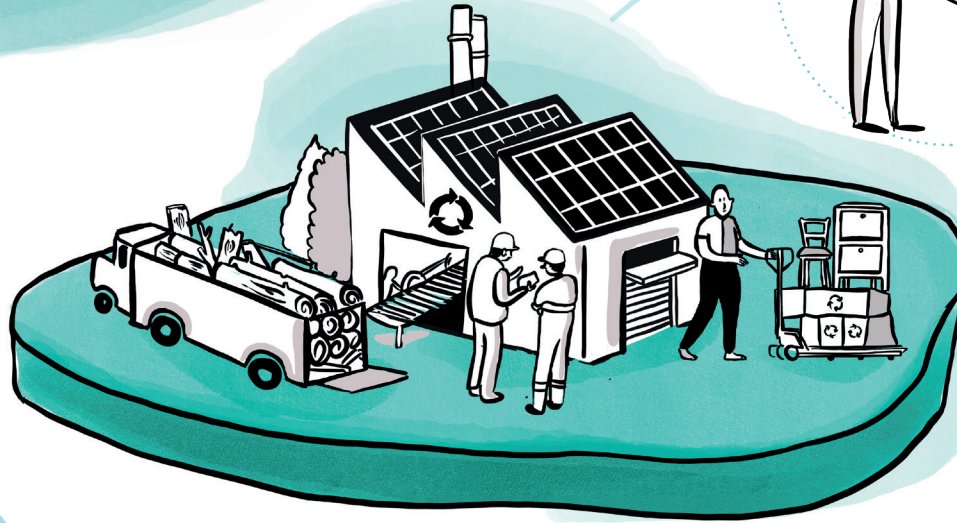
INDICATIVE ACTIVITIES

→ Consumer awareness campaigns on reduction, reuse and recycling

→ Development of collaborative platforms in terms of waste recovery, eco-design, pooling of needs, reuse, product sharing, resourcing, etc.

→ Technical and financial support for consumer and user initiatives

INTEGRATION OF CIRCULAR ECONOMY PRINCIPLES IN PRODUCTION SYSTEMS



The private sector coordination platforms (chambers of commerce, cooperatives...) act as intermediaries towards the adaptation of production systems



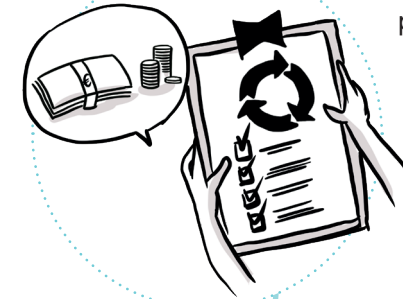
Good practices are valued and shared



New public-private partnership opportunities are developed in the areas of reduction, reuse and recycling



Companies are aware of the legal and regulatory frameworks related to the circular economy



The criteria of financial institutions integrate the principles of CE

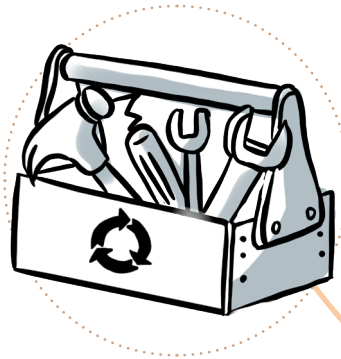


Information on funding mechanisms is accessible and known

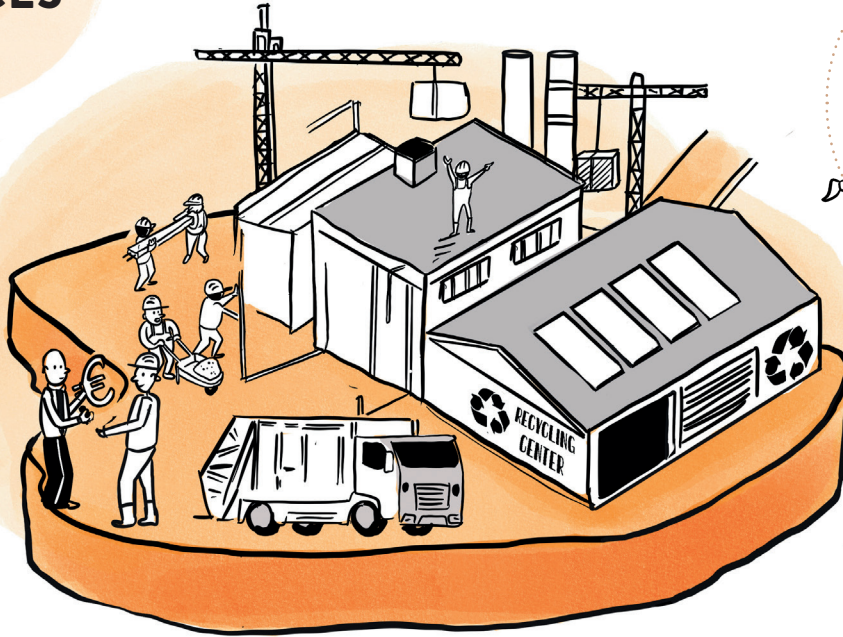
INDICATIVE ACTIVITIES

- Training for companies and financial institutions on the circular economy (sectoral coverage, recycling, re-use) and its application
- Development of training curricula for the new professions in the circular economy
- Linking public and private actors for an exchange of practices
- Linking the public and private sectors for PPP development
- Strengthening the technical capacity of private actors on applicable CE standards

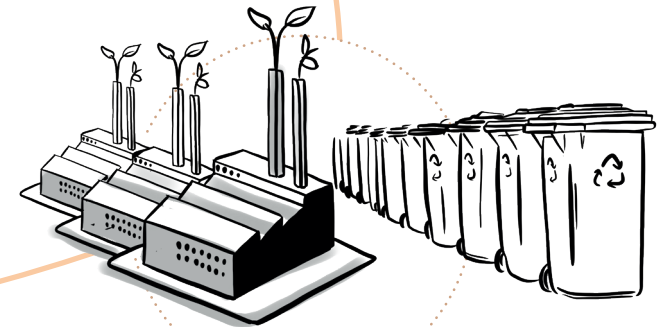
DEVELOPMENT OF ACCESSIBLE SERVICES



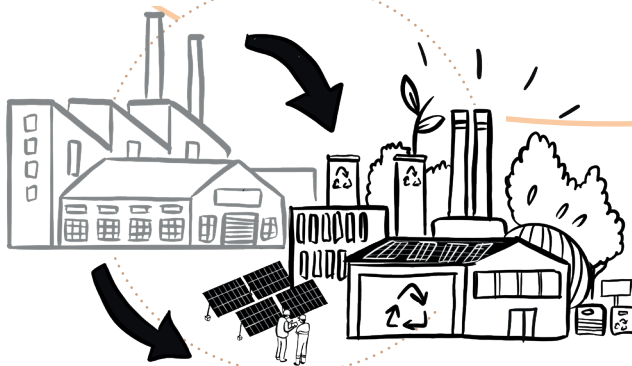
The maintenance of infrastructure and equipment incorporates the principles of the circular economy



Investments are made to develop infrastructure and services in terms of waste management, recycling and reuse



Waste management, recycling or reuse infrastructures and services are developed



Existing infrastructures are adapted to meet the challenges related to the circular economy

INDICATIVE ACTIVITIES

- Support for public actors in public procurement and monitoring of public contracts
- Provision of equipment for local authorities in charge of waste management and the circular economy in the different sectors (purchasing, environment, etc.)
- Investment planning and implementation of incentives for circular economy investments
- Development of infrastructure for waste management, recycling or re-use services
- Implementation of tools and measures promoting private sector participation in the waste management and recycling
- Training of local authorities on infrastructure maintenance, integrating the principles of resilience and efficiency in the use of resources